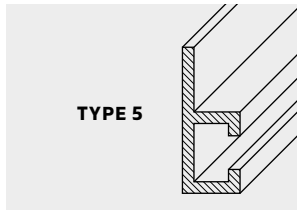


# HEAVY DUTY



COLOUR

CERTIFIED  
300 KG



Staffe industriali relizzate in lamiera zincata e verniciate con polveri poliesteri.

## VANTAGGI

Realizzate per sostenere le macchine più pesanti. Portate elevate garantite.

## [EN]

Heavy-duty wall brackets made of galvanized steel, varnish finished with polyester powder.

## ADVANTAGES

Made to hold heavy-duty units. High load capacities guaranteed.

## [FR]

Supports muraux lourds réalisés en acier zingué et peints à la poudre polyestere.

## AVANTAGES

Etudiés pour supporter les machines les plus lourdes. Charges élevées garanties.

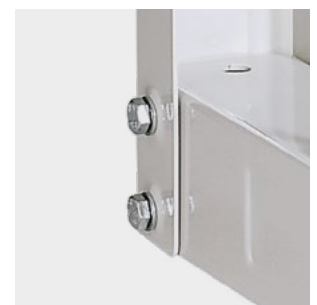


## PLUS



65 mm

## M8 8.8

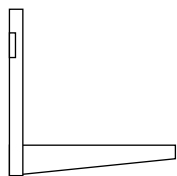


# HEAVY DUTY

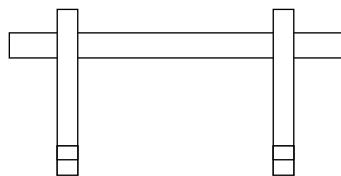


COLOUR

CERTIFIED  
300 KG



520/560 mm

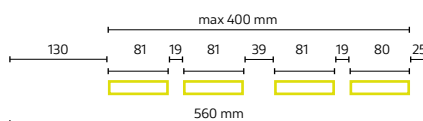
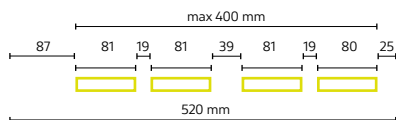


65 mm

850/960 mm

## INTERASSI

DRILLING DIAGRAM / ENTRAXES



## 300 KG DOMESTIC USE

TESTATA 900 KG / TESTED 900 KG / TESTÉ 900 KG

<b>S-572</b>	X	P520xH400xL850 mm	70 set	P110xH75xL1025 mm	<b>€ 72,20</b>
<b>S-572-1</b>	✓	P520xH400xL960 mm	70 set	P110xH75xL1025 mm	<b>€ 78,26</b>
<b>S-573</b>	X	P560xH400xL850 mm	70 set	P110xH75xL1025 mm	<b>€ 75,76</b>
<b>S-573-1</b>	✓	P560xH400xL960 mm	70 set	P110xH75xL1025 mm	<b>€ 79,93</b>

## FORNITE CON

SUPPLIED WITH / FOURNIS AVEC

