

KIT HEAT PUMPS

NEW



KIT FOR HEAT PUMPS / KIT POUR POMPE A CHALEUR

SBR **300 KG** **COLOUR** **COLOUR**

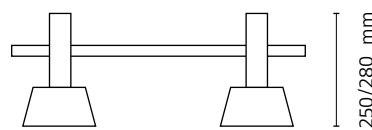
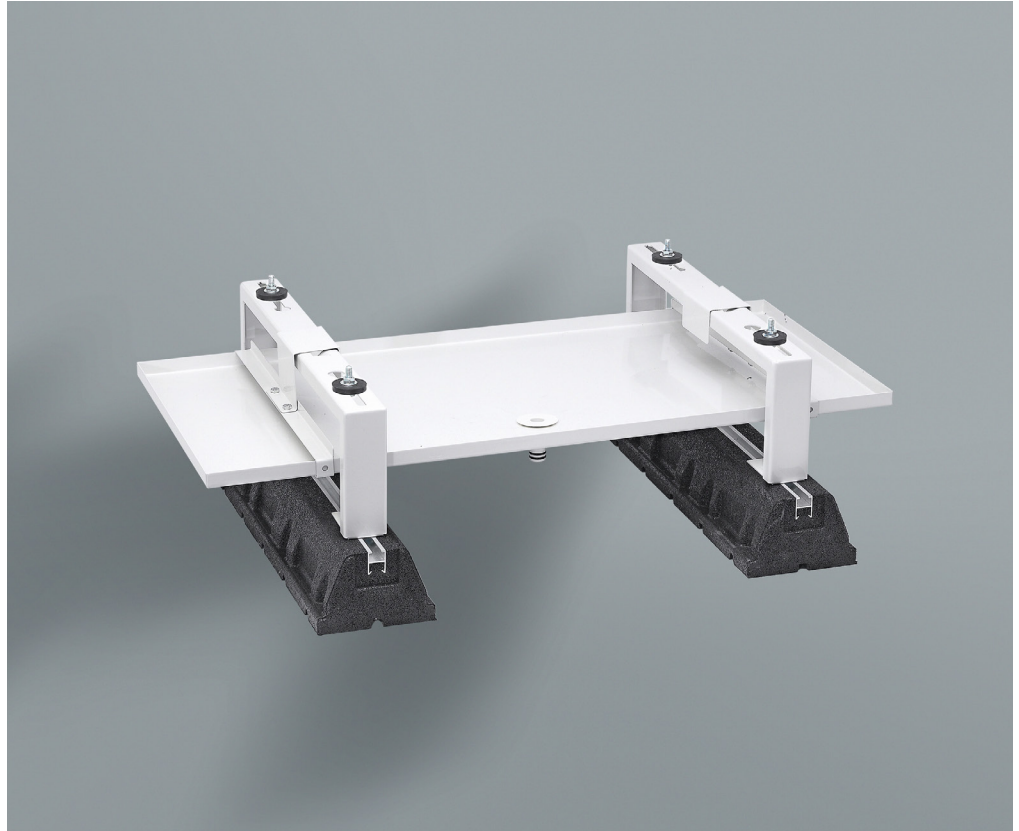
Kit d'installazione realizzato in acciaio zincato verniciato e supporto in gomma Brooklyn L600 mm, completo di bacinella per lo scarico condensa con piletta \varnothing 20 mm. Studiato per areare correttamente le pompe di calore con un'altezza di 250 mm e grazie alle basi in gomma ammortizzare le vibrazioni al suolo.

[EN]

Installation kit for heat pumps consists of galvanized and varnished metal supports on Brooklyn rubber bases with tray for the collection of condensation water. Designed to ensure a better airflow under the heat pumps with the correct height of 250mm. Vibrations reduced thanks to the rubber bases.

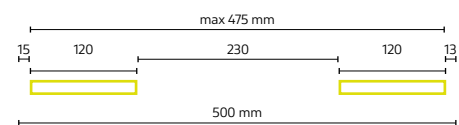
[FR]

Kit d'installation réalisé en acier galvanisé peint et composé par les supports en caoutchouc Brooklyn et le bac de récupération de condensats avec raccord \varnothing 20mm. Projeté pour l'aération correcte des pompes à chaleur avec une hauteur de 250 mm. Il réduit les vibrations grâce aux supports au sol.



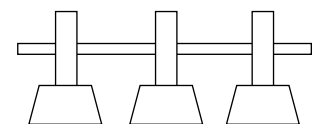
INTERASSI

DRILLING DIAGRAM / ENTRAXES



300 KG

S-836-71	H250/280mm x P500 mm	25 pz	300 Kg
S-836-71.3	H250/280mm x P500 mm		300 Kg



Completa di bacinella in metallo / with condensate water tray / avec bac de récupération L940 x P420 mm

KIT HEAT PUMPS CON 3 SUPPORTI / 3 SUPPORTS

OPTIONAL

CAVO SCALDANTE IDEALE PER LO SCONGELAMENTO

[EN]

HEATING CABLE IDEAL COMPONENT TO DEFROST

[FR]

CÂBLE CHAUFFANT IDÉAL POUR DÉCONGELER



v. pag. 66

NEW